

Case 436HD | NH 340HD

Hardware

Item #12141

Installation Instructions







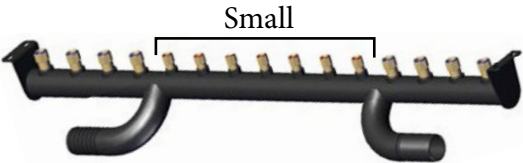











Tools Needed:

Drill	3/4" End Wrench
Socket Driver	3/4" Socket
1/4" Drill Bit	9/16" End Wrench
3/8" Drill Bit	9/16" Socket
17mm End Wrench	Floor Jack
17mm Socket	
18mm Wrench/Socket	

CIH LB 436HD | NH 340HD V1 #12141



Description	Qty	Picture			
TF Cut Template Part # 37154	1				
BR Cut Template Part # 37166	1				
TF Manifold With Nozzles # 37281 Without Nozzles # 37146	1				
BF Manifold With Nozzles # 37280 Without Nozzles # 37148	1				
TR Manifold With Nozzles # 37278 Without Nozzles # 37160	1	  Install ↑ 45° Elbows			
BR Manifold With Nozzles # 37279 Without Nozzles # 37165	1				
Distribution Manifold With Camlocks # 37277 Without Camlocks # 37141	1		Distribution Manifold Bracket Part # 37135	2	
Hose Support Clamp Bracket 1 Part # 37169	1		Hose Support Clamp Bracket 2 Part # 37170	1	
Hose Bracket Part # 37163	1		Hose Bracket Part # 23922	1	
Left Hose Bracket 1 Part # 37155	1		Left Hose Bracket 2 Part # 37168	1	
Pickup Stop Collar Part # 37216	1				

CIH LB 436HD | NH 340HD V1 #12141

Hardware Hose		Hydraulic Kit		Top Front Manifold		Bottom Rear Manifold	
Description	Qty	Description	Qty	Description	Qty	Description	Qty
3/4" x 25 ft Heater Hose	1	#8 JIC Male 90° Elbow	2	3/8" x 1" Button Head Bolts	4	3/8" x 1" Button Head Bolts	4
2" x 86" Steam Hose LTF	1	1/2" Male Hydraulic Coupler	2	3/8" Flanged Serrated Nuts	4	3/8" Flanged Serrated Nuts	4
2" x 102" Steam Hose LTR	1	Hydraulic Coupling Snap Ring	4	Bottom Front Manifold		Distribution Manifold	
2" x 163" Steam Hose LBR	1	Hydraulic Quick Coupling	2	Description	Qty	Description	Qty
2" x 154" Steam Hose LBF	1	1/2" x 278.5" Hydraulic Hose	2	1/2" x 1-1/2" Flanged Serrated Bolts	4	3/8" x 1-1/2" Flanged Serrated Bolts	4
2" x 83" Steam Hose RTF	1	5/8" Hydraulic Hose Rail Mounts	2	1/2" Flanged Serrated Nuts	4	3/8" x 1" Flanged Serrated Bolts	4
2" x 96" Steam Hose RTR	1			Top Rear Manifold		3/8" Flanged Serrated Nuts	8
2" x 175" Steam Hose RBR	1			Description	Qty		
2" x 168" Steam Hose RBF	1			Use Existing Bolts			

Hose Routing Hardware			
Description	Qty	Description	Qty
3/8" x 1" Flanged Serrated Bolts	8	#10 Hose Clamps	1
3/8" x 1-1/2" Carriage Bolts	2	3/4" HB x 3/4" Female Camlock	1
3/8" x 1" Carriage Bolts	1	Zip Ties	20
3/8" x 2-1/2" Flanged Serrated Bolts	2	15" Rubber Strap	2
3/8" Flanged Serrated Nuts	13	1" Hole Saw	1
2-1/2" Rubber Loop Clamps	7	DewPoint Ready Stickers	2
#36 Hose Clamps	25		

CASE 436HD | NH 340HD HARDWARE INSTALL

1



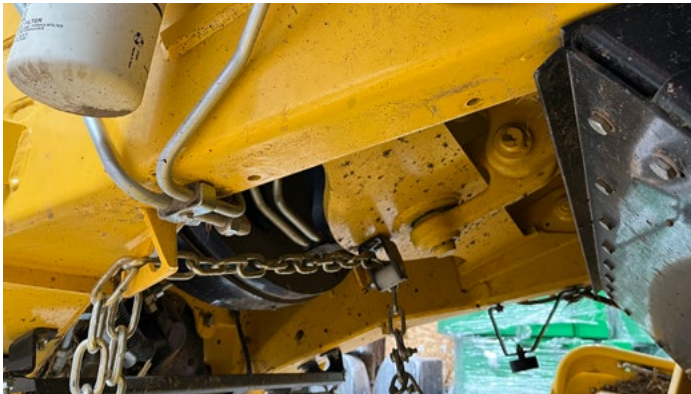
Install the top rear manifold. (Steps 1-7)

2



Remove the 4 bolts shown above using an 18mm wrench or socket.

3



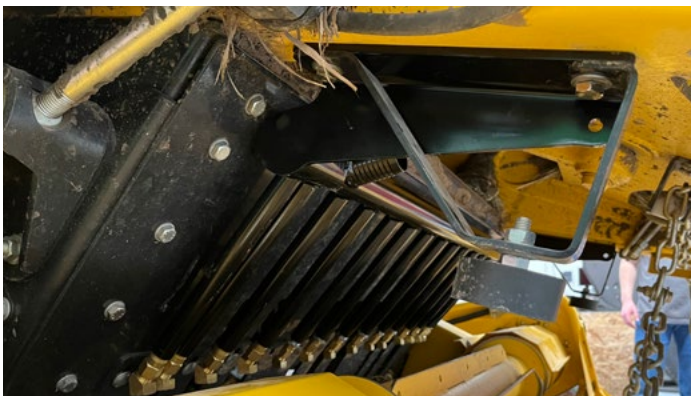
Bolts shown removed.

4



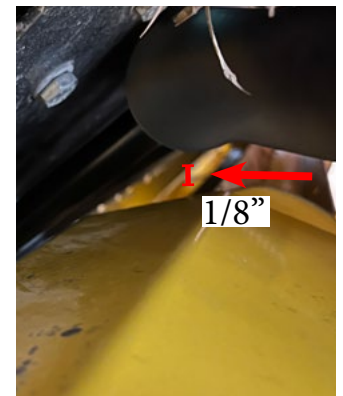
Hold the manifold and the bump bracket into place while tightening the bolts with an 18mm wrench or socket.

5



Top rear manifold shown installed.

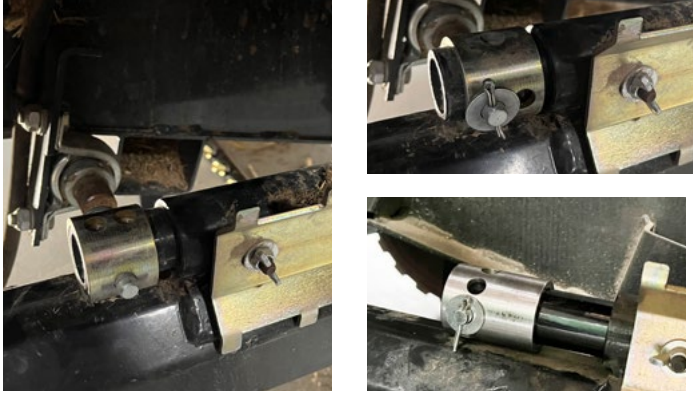
6



Lift up the pickup with a floor jack until the pickup is 1/8" or further from hitting the top rear manifold.

CASE 436HD | NH 340HD HARDWARE INSTALL

7



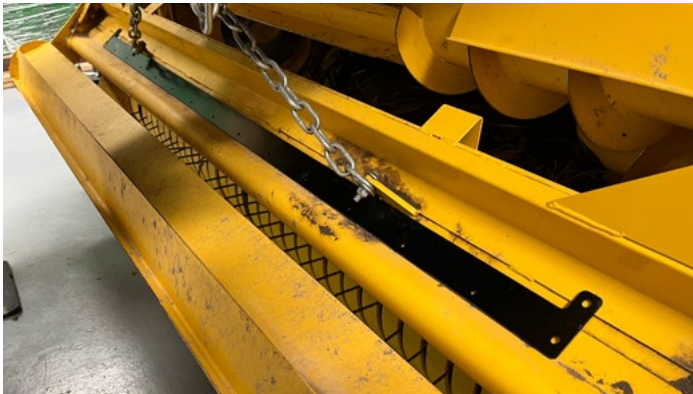
Adjust the pickup stop collar to ensure the pickup cannot interfere with the top rear manifold. Use the included stop collar if more clearance is needed.

8



Install the top front manifold. (Step 8-19)

9



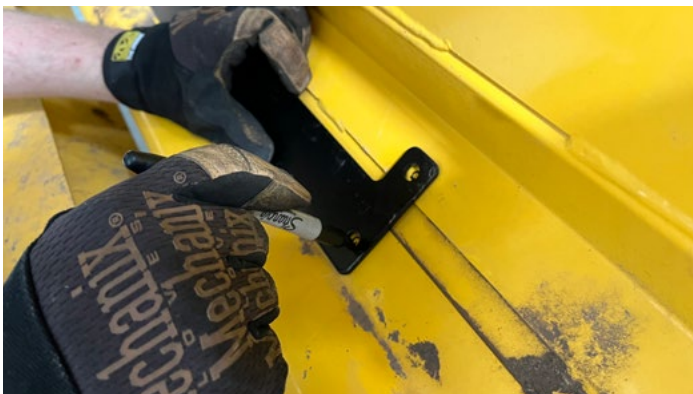
Place the top front cut template on the wind guard as shown.

10



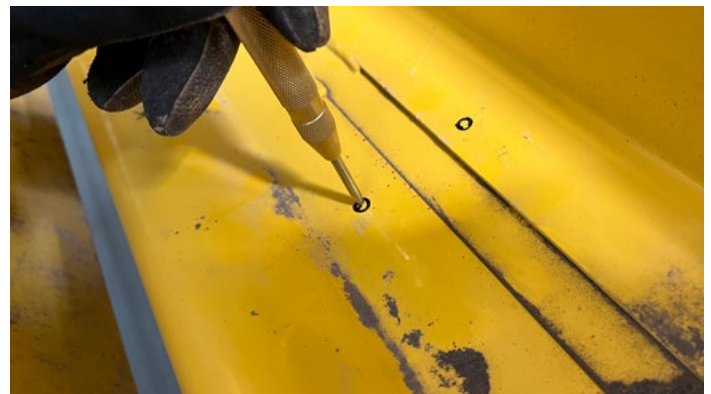
Center the cut template.

11



Mark the 4 outside holes.

12



Center punch the 4 marks.

CASE 436HD | NH 340HD HARDWARE INSTALL

13



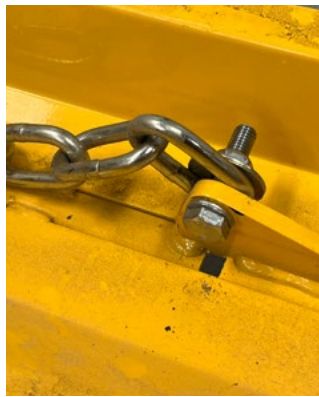
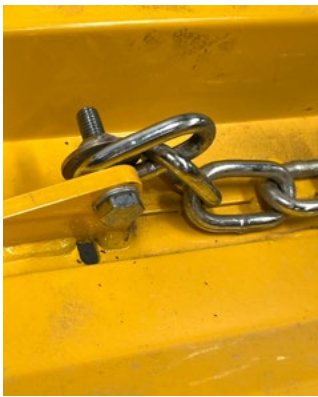
Drill 4 holes with 3/8" drill bit.

14



Remove and reinstall these bolts in the opposite direction using a 17mm wrench and socket.

15



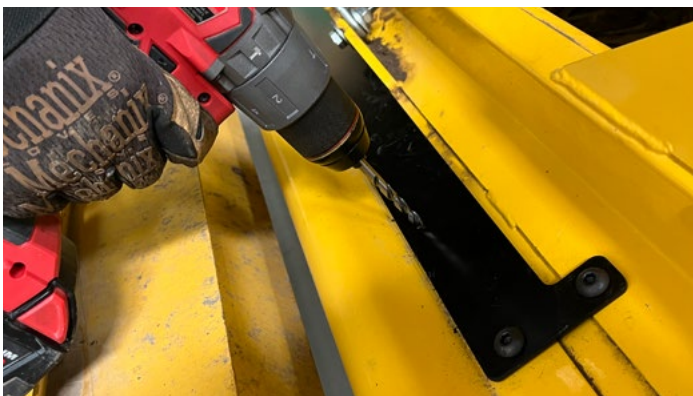
Bolts shown flipped around.

16



Mount the template in place using the 3/8" button head bolts.

17



Drill each template hole with the 1/4" drill bit.

18



Remove the template and then drill out all 1/4" pilot holes using the 1" hole saw.

CASE 436HD | NH 340HD HARDWARE INSTALL

19



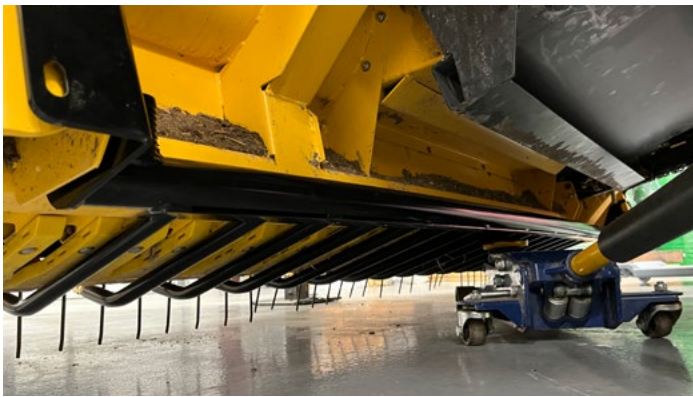
Install the top front manifold using the 3/8" button head bolts up from the bottom (nuts on top). Use a 9/16" wrench or socket.

20



Install bottom front manifold. (Steps 20-27)

21



Use a floor jack to hold the bottom front manifold into place.

22



Make sure the tubes are snugged up against the stripper guards.

23



Mark the 4 holes.

24



Center punch the 4 marks.

CASE 436HD | NH 340HD HARDWARE INSTALL

25



Drill out all 4 holes using a 1/2" drill bit.

26



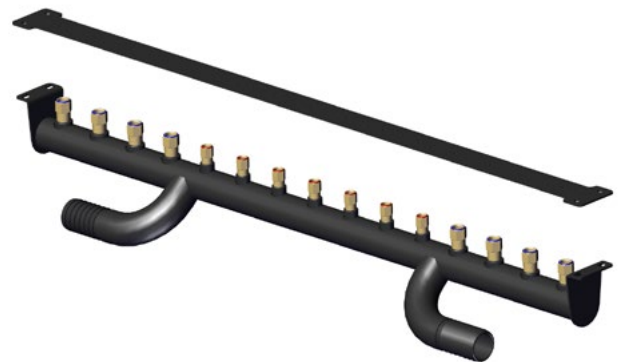
Install the bottom front manifold using 1/2" x 1-1/2" bolts and nuts. Use a 3/4" wrench and socket.

27



Make sure all of the tubes are evenly spaced and tight against the stripper guards.

28



Install the bottom rear manifold. (Steps 28-37)

29



Center the bottom rear cut template as shown.

30



Measure 3-1/2" as shown above.

CASE 436HD | NH 340HD HARDWARE INSTALL

31



Mark the 4 outside holes.

32



Center punch and drill the 4 outside holes to 3/8".

33



Slide the 3/8" button head bolts down through the top of the plate.

34



Mount the cut template and drill each template hole with the 1/4" drill bit.

35



Drill each 1/4" hole out to 1" using the hole saw.

36



Use a bendy bar (concrete stake with an acute angle) to bend each of the bottom rear holes so that the hay will jump over the holes. You may have to bend from the bottom side.

CASE 436HD | NH 340HD HARDWARE INSTALL

37



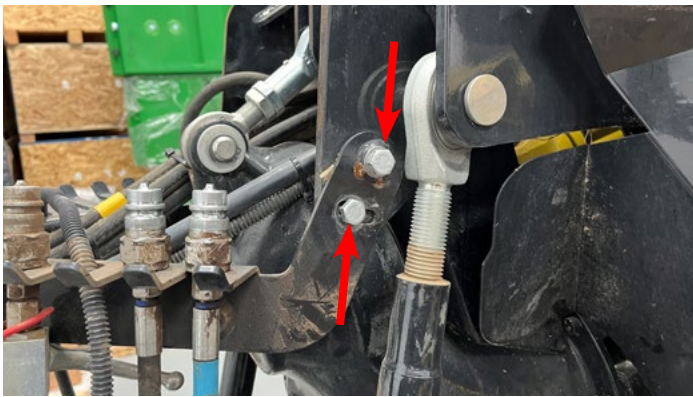
Mount the bottom rear manifold using the 3/8" button head bolts and 3/8" nuts. Use a 9/16" socket.

38



Install the distribution manifold. (Steps 38-45)

39



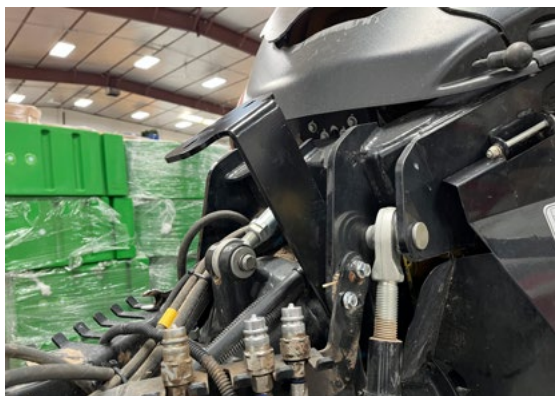
Use a 17mm wrench or socket to remove the bolts shown above.

40



Bolts removed.

41



Install the distribution mount bracket using 3/8" x 1-1/2" bolts and nuts.

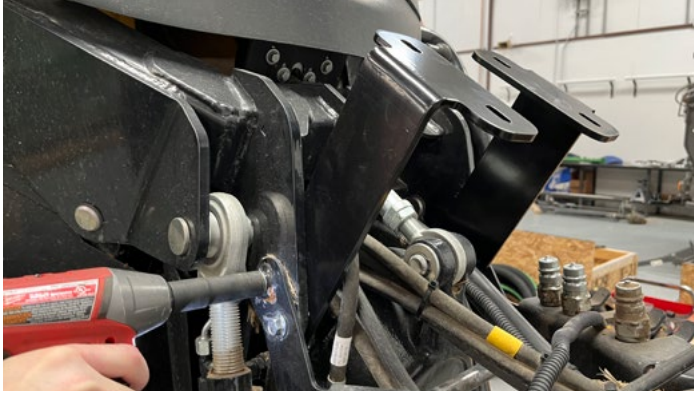
42



Bracket shown installed.

CASE 436HD | NH 340HD HARDWARE INSTALL

43



Mount the other bracket the same as in steps 40-42.

44



Lift the distribution manifold on top of the brackets and mount into place using the 3/8" x 1" bolts and nuts.

45



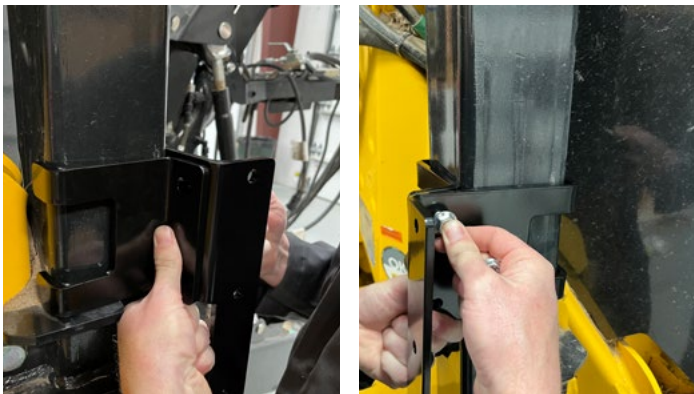
Distribution manifold shown mounted.

46



Install the hose routing brackets. (Steps 46-63)

47



Install the 2 hose support clamp brackets using two 3/8" x 1" bolts and nuts.

48



Clamp brackets shown installed.

CASE 436HD | NH 340HD HARDWARE INSTALL

49



On the right side of the baler, hold the hose bracket shown above into place and mark the holes.

50



Center punch and drill each hole with a 3/8" drill bit.

51



Mount the bracket with two 3/8" x 1" bolts and nuts.

52



On the left side of the baler remove the two bolts shown above using a 17mm wrench or socket.

53



Remove the tool box bracket.

54



Slide the hose bracket on the backside as shown above.

CASE 436HD | NH 340HD HARDWARE INSTALL

55



Install the hose bracket and the tool box bracket using two 3/8" x 1-1/2" carriage bolts and nuts supplied.

56



Shown installed.

57



Slide on the second piece of the bracket.

58



Secure the second bracket with a 3/8" x 1" bolt. Leave loose until hose routing is finished.

59



On the left hand side of the baler remove this nut and bolt using a 17mm wrench or socket.

60



CASE 436HD | NH 340HD HARDWARE INSTALL

61



Install the hose bracket as shown using the 3/8" x 1" carriage bolt.

62



63



Install loop clamps using a 3/8" x 2-1/2" bolt and nut.

64



Hose routing pictures. (Steps 64-93)
Use two hose clamps on each hose.

65



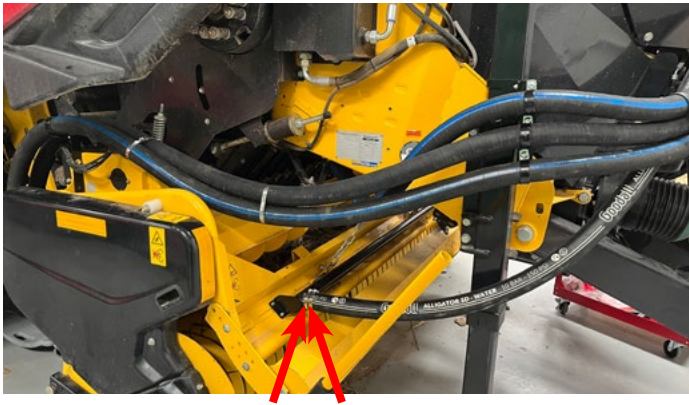
66



15" rubber strap.

CASE 436HD | NH 340HD HARDWARE INSTALL

67



Use two hose clamps on each hose.

68



69



Use two hose clamps on each hose.

70



71



3/8" x 2-1/2" bolt with two loop clamps.

72



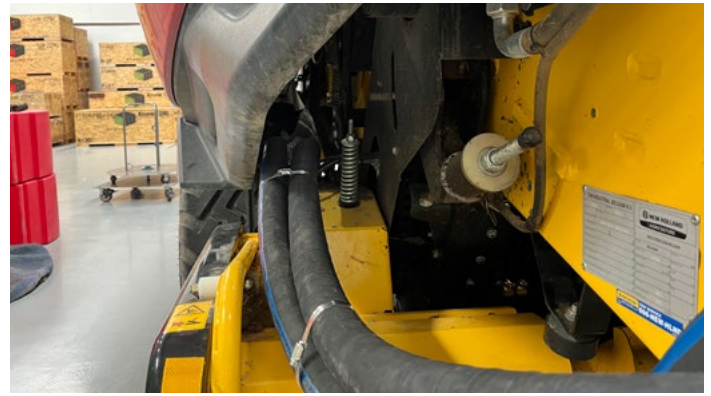
CASE 436HD | NH 340HD HARDWARE INSTALL

73



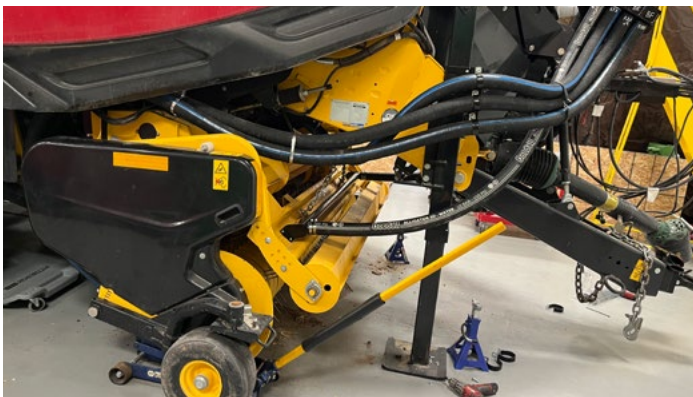
Use two hose clamps on each hose.

74



Ensure that the hood closes without hitting the steam hoses.

75



Pickup lowered.

76



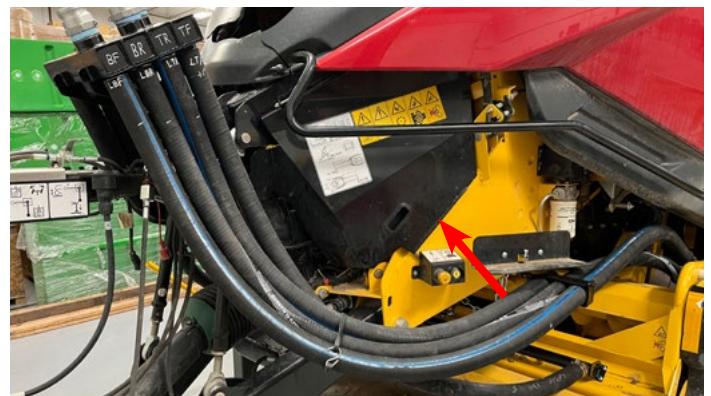
Raise and lower the pickup and make sure there is necessary slack and that the hoses aren't rubbing excessively on anything.

77



Use two hose clamps on each hose.

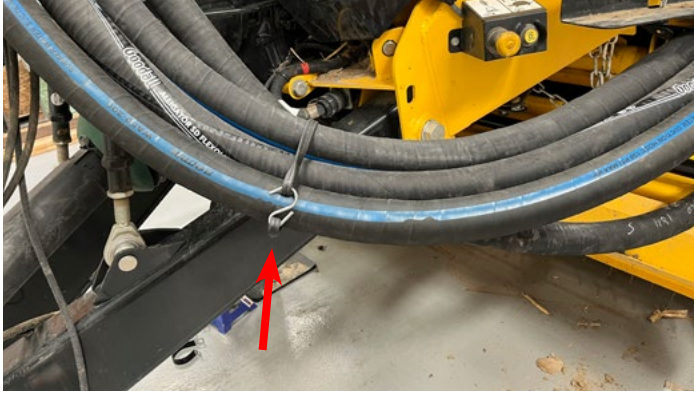
78



Route hoses so this access door can still open.

CASE 436HD | NH 340HD HARDWARE INSTALL

79



15" rubber strap.

80



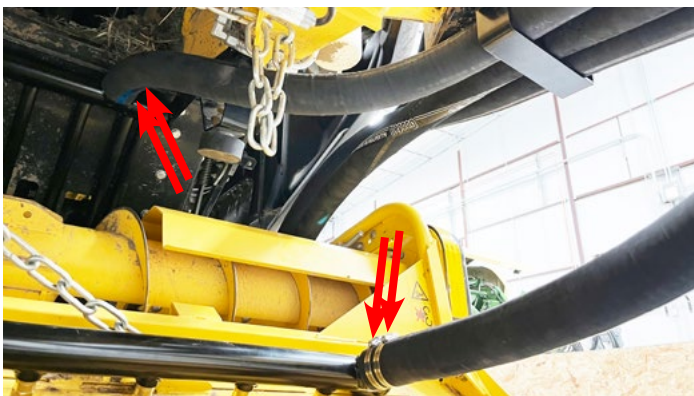
81



82

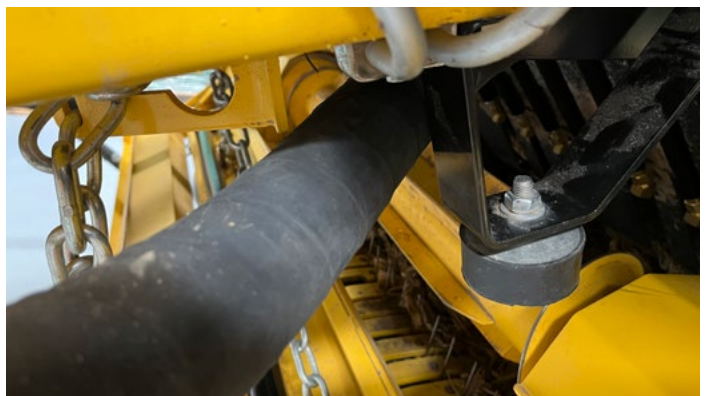


83



Use two hose clamps on each hose.

84



CASE 436HD | NH 340HD HARDWARE INSTALL

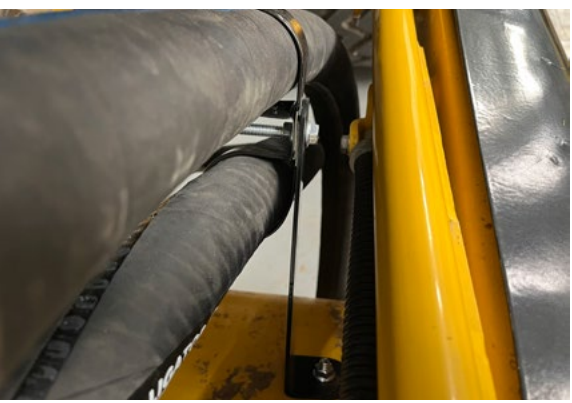
85



86



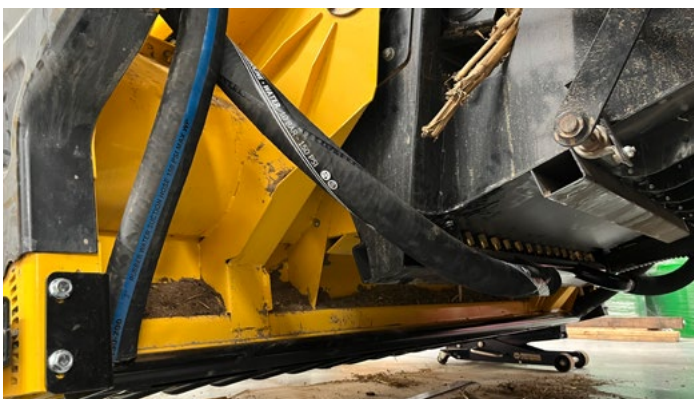
87



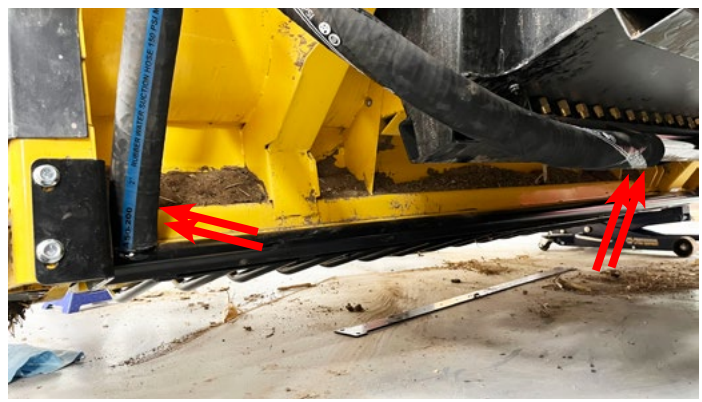
88



89



90



Use two hose clamps on each hose.

CASE 436HD | NH 340HD HARDWARE INSTALL

91



92



Raise and lower the pickup and make sure there is necessary slack and that the hoses aren't rubbing excessively on anything.

93



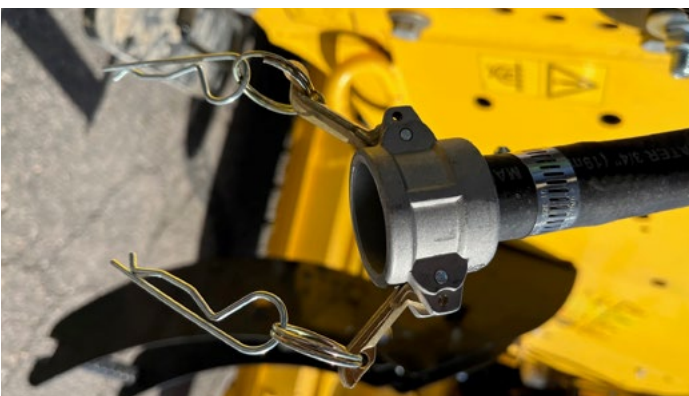
Ensure that the hood closes without hitting the steam hoses.

94



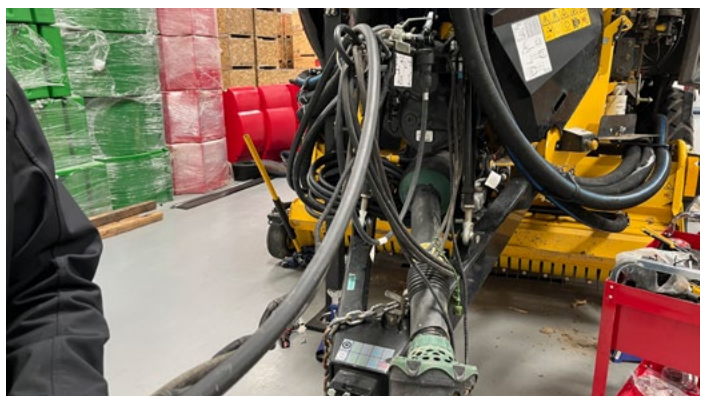
Route the blowdown hose. (Steps 94-104)
Make sure the blowdown hose extends as far as the hydraulic hoses.

95



Install 3/4" female camlock in the blowdown hose.

96



Route as shown. Use zip ties as needed to secure the blowdown in place.
DO NOT KINK BLOWDOWN HOSE.

CASE 436HD | NH 340HD HARDWARE INSTALL

97



98



99



100



101



102



CASE 436HD | NH 340HD HARDWARE INSTALL

103



104



Make sure the blowdown hose will not purge water onto the baler tires.



Inspect hose routing for possible areas of interference or contact with sharp edges.
Make changes if necessary to protect the hoses and hardware.